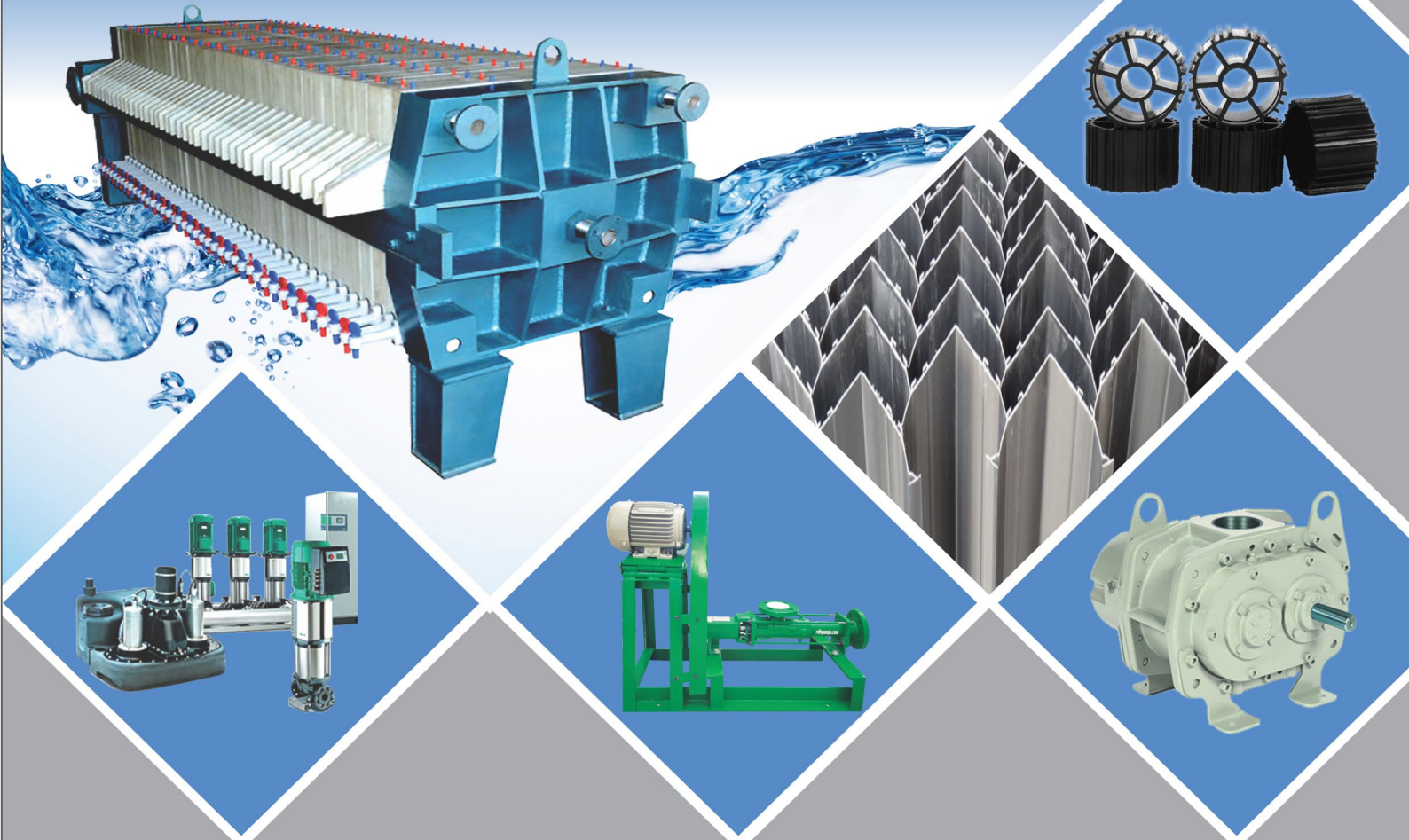




UNIVERSAL TECH TRADE PVT. LTD.

AN ISO 9001:2015 CERTIFIED COMPANY



UNIVERSAL TECH TRADE PVT. LTD. is a manufacturer, distributor and service provider company for Industrial equipment in the Indian engineering, systems manufacturing and construction sector. Established in 2012. we provide our engineering and service expertise to satisfy customer/client product requirements. We are the leaders in the areas of Pumps & Waste water Equipment etc.

We are Authorised Distributor of the world leading brands of **WILO PUMPS, CROMPTON PUMPS, ROTO SCREW PUMP & INGERSOLL RAND AIR BLOWER.**

We are Manufacturer of Waste Water Treatment Equipment Like: **Filter Press, Centrifuge, Oil-Skimmer, U.V. System, Bio-Pac Media, Tube Deck Media, Air Diffusers & Agitator etc.**

As a system supplier combined with marketing company, we offer our wide portfolio of business partners/products to the CBS and OEM industries. Our services include training, preventive maintenance, spare parts, replacement pumps, retrofits, field services and repairs. we have the technical experience and knowledge combined with speed and quality of service to facilitate the production of customised solutions for our clients. We continue to extend our market in North India along with our business partners, while being committed to our past/earlier/premium customers.

we take responsibility for our planet. Our motto is to be the solution. Therefore, we only associate ourselves with brands that are known for their energy efficiency and responsibility towards the environment. The management is a fine blend of Engineers, Solution Consultants and management professionals having long standing experience and relentless passion in the industry. After recommended by customers for their skill, experience, expertise and customer service, our team has made universal one of the most reliable brands in the industry.



Authorised Dealer : **wilo** **Mather+Platt** **IR Ingersoll Rand** **Roto pumps** **Crompton**

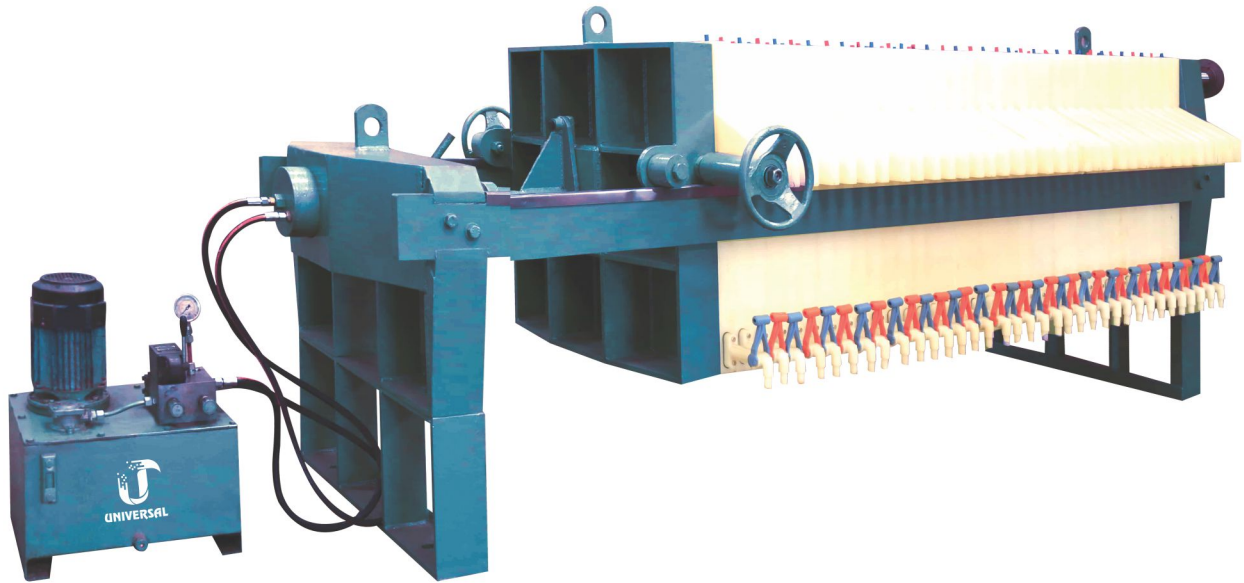
Deals In: Water Supply Pump, Sewage Pump, Screw Pump, Dosing Pump, Filter Press, Centrifuge, Oil-Skimmer, U.V. System, Bio-Pac Media, Tube Deck Media, Air Diffusers & Agitator etc.



Regd. Office: Plot No. 48, 1st Floor, Peeragarhi, Near Rawat Motor, New Delhi 110087

Works: H-51/11, Laxmi Park, Nangloi, New Delhi 110041

Mobile : +91 9971173388, 9810573578 | Email : universaltechtrade@gmail.com | www.universaltechtrade.com



Technical Details of Filter Press:

Model No.	Size	No. of Plates	MOC	Cake Holding Cap.	Filtration Area	Operating Pre. Bar	Tightening Mechanism
UTFP-12x12	12"	11	PP + MS	24 Ltrs.	1.62 M2	3.0 - 4.0	Manual / Hydraulic
UTFP-18x18	18"	17	PP + MS	120 Ltrs.	6.20 M2	4.0 - 5.0	Manual / Hydraulic
UTFP-18x24	18"	23	PP + MS	160 Ltrs.	8.26 M2	4.0 - 5.0	Manual / Hydraulic
UTFP-24x24	24"	23	PP + MS	290 Ltrs.	15.59 M2	4.0 - 5.0	Manual / Hydraulic
UTFP-30x30	30"	29	PP + MS	530 Ltrs.	31.10 M2	5.0 - 6.0	Manual / Hydraulic
UTFP-32x32	32"	31	PP + MS	620 Ltrs.	32.00 M2	5.0 - 6.0	Manual / Hydraulic
UTFP-36x36	36"	35	PP + MS	930 Ltrs.	54.50 M2	5.0 - 6.0	Manual / Hydraulic
UTFP-40x40	40"	39	PP + MS	1365 Ltrs.	58.50 M2	5.0 - 6.0	Manual / Hydraulic
UTFP-48x48	48"	47	PP + MS	2350 Ltrs.	111.86 M2	5.0 - 6.0	Manual / Hydraulic

CENTRIFUGE

This is the most modern design, sturdy construction, rapid acceleration. Heavy duty type basket centrifuge. This is a top charge. Top discharge type, Unloading from the top by hand scrapping. conceptual batch type Hydro Extractor and the size and material of Basket and outer case is selected on the basic of applications. The basket is dynamically balanced so that vibration free operation is achieved.



Technical Details Centrifuge:

Model	Basket Size	MOC	Capacity	Speed Rpm	Motor	Floor Space	Weight kg.
UTCF-12	300x240mm	MS/SS	5kg/Batch	1700	1.0 HP	600x600	105 kg.
UTCF-16	400x280mm	MS/SS	15kg/Batch	1400	1.5 HP	800x800	275 kg.
UTCF-18	450x280mm	MS/SS	20kg/Batch	1200	2.0 HP	800x800	300 kg.
UTCF-20	500x280mm	MS/SS	25kg/Batch	1100	2.0 HP	800x800	380 kg.
UTCF-24	600x350mm	MS/SS	45kg/Batch	1100	3.0 HP	900x900	550 kg.
UTCF-30	750x350mm	MS/SS	75kg/Batch	1100	5.0 HP	1100x1100	750 kg.
UTCF-36	915x450mm	MS/SS	150kg/Batch	900	7.5 HP	1350x1350	1400 kg.
UTCF-48	1220x500mm	MS/SS	280kg/Batch	820	12.5 HP	1600x1600	2700 kg.

WATER & WASTE WATER PUMPS



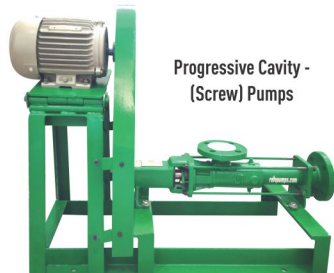
- Vertical / Horizontal Multistage Pump
- Self priming Monoblock Mud Pump
- Monoblock Pump
- HVAC / Fire Fighting Pumps & Systems
- Sewage / Drainage Sump Pump.
- Cutter Pump

wilo

Mather+Platt

Crompton

SCREW PUMP



Progressive Cavity - (Screw) Pumps

Model No.	Flow	Head	Motor
RDAA491R6CD1D	1m ³ / hr	60 MH	1 HP / 1450 RPM
RDAA511R2CD1D	2m ³ / hr	50 MH	1.5 HP / 1450 RPM
RDAA531R2CD1D	3m ³ / hr	50 MH	1.5 HP / 1450 RPM
RLAB541R2CD1D	5m ³ / hr	50 MH	3 HP/ 1450 RPM
RLAB571R2CD1D	10m ³ / hr	50 MH	5 HP/ 1450 RPM
RLAB591R2CD1D	20m ³ / hr	50 MH	5 HP/ 1450 RPM

Roto pumps

AIR BLOWER



Model No.	Flow Range (M ³ /hr)	RPM	Pressure kg/sqcm	HP
S2H22	5-22	900-1850	0.5	1-2 HP
S2H23	10-50	1200-1900	0.5	2-3 HP
S2H31	51-60	1300-1850	0.5	3-5 HP
S2H32	81-125	1440-1950	0.5	5-7.5 HP
S2H33	125-210	1350-1925	0.5	7.5-10 HP
S2H42	210-260	1550-1900	0.5	10 HP
S2H43	260-370	1400-1850	0.5	10-12.5 HP
S2H52	370-495	1400-1800	0.5	15-20 HP
S2H53	495-1000	1155-1975	0.5	20-30 HP

IR Ingersoll Rand

DOSING PUMP - MILTON ROY



Model	Flow	Pressure
UC-11	4 LPH	5.5 kg / cm ²
V-12	6 LPH	3.5 kg / cm ²
V-13	12 LPH	2 kg / cm ²
B-13	17 LPH	3.5 kg / cm ²
M-12	30 LPH	10 kg / cm ²
M-13	50 LPH	5 kg / cm ²
M-14	100 LPH	3 kg / cm ²
GB-402	160 LPH	8 kg / cm ²
GB-403	320 LPH	8 kg / cm ²
GB-404	400 LPH	8 kg / cm ²
GB-604	560 LPH	5 kg / cm ²
GB-804	1175 LPH	3.5 kg / cm ²



UV SYSTEM

Application: Clear Water & Waste Water Treatment
UV Lamp Type: Low Pressure, High-performance quartz lamps
Recommended UV Lamp Life: Upto 8500 hours.
Ballast: Matched high frequency electronic ballasts
Input Power: 230-240V AC, 50-60 Hz
UV Chamber: Electro-polished SS316L
Lamp Fail Alarm: Audiovisual



OIL SKIMMER

A belt skimmer is a very simple product to remove the floating oil. A belt skimmer is mounted on tank tops. The unit consists of two (2) pulleys. Fluid flows slowly over the belt leaving the floating oil on the surface of the belt.



Authorised Dealer : **wilo** | **Mather+Platt** | **IR Ingersoll Rand** | **Crompton** | **Roto pumps**

Deals In: Water Supply Pump, Sewage Pump, Screw Pump, Dosing Pump, Filter Press, Centrifuge, Oil-Skimmer, U.V. System, Bio-Pac Media, Tube Deck Media, Air Diffusers & Agitator etc.

MBBR (FAB) MEDIA

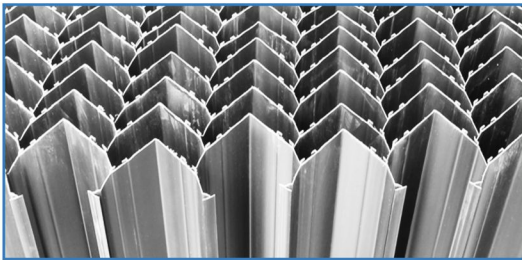
Universal- Make MBBR MEDIA virtually increases the surface area of the aeration tank required for bio growth which aid in digesting the organic matter useful in the treatment of, municipal and industrial effluent. The Media provides high surface area per unit volume rendering it more effective, which also comes with a very competitive price.



Type of Media	Fluidized Random Bio Media
Media Height	16 mm
Media Dia Meter	22 mm
Moc of Media	PP
Colour	Black
Specific Density	0.90 - 0.97 gms / cm3

TUBE SETTLER MEDIA

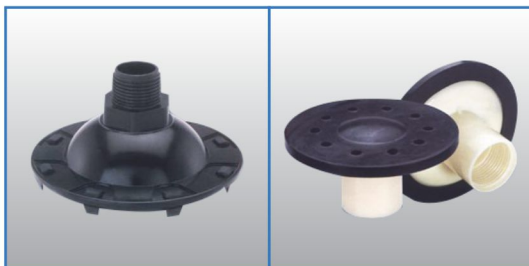
Universal- Make tube settlers use multiple tubular channels sloped at an angle of 55°-60° and adjacent to each other, which combine to form an increased effective settling area.



Plan Settling Area of Media	60° Slope -11 M2 / m3
Cross Sectional Size	120 mm X 44 mm
Shape	Hexagonal Chevron
Moc of Media	PVC
Thickness	1 mm (appx.)
Fitting Arrangement	Tongue & Groove
Max. Continuous Operating Temperature	55°C
Colour	Black
Size	750 mm / 866 mm / 1000 mm

COARSE BUBBLE DIFFUSER (EPDM/SILICON)

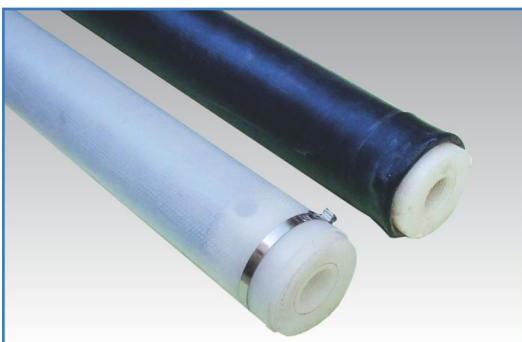
Universal- Make Coarse Bubble Diffusers to the clients spread across the domestic market. These diffusers have finely divided air bubbles, which ensure freedom from common clogging problems. The piece plastic diffuser base and neoprene disc fitted in these diffusers assures hassle free operations with minimal corrosion problems.



Model No.	Air Flow	Connection Size	Bubble Size	No. of Ports
CBD-80	1.0-5.0 M3	3/4" BSP	4-5 mm	10
CBD-150	4.0-10.0 M3	1" BSP	6-8 mm	8

FINE BUBBLE DIFFUSER (EPDM/SILICON)

Universal-Make Tube diffuser is an assembly of high-quality EPDM/SILICON membrane of 63mm diameter and 610mm length on standard PVC pipe and tightly held by SS 304 clamps to ensure trouble free operation. The air inlet is through rigid PVC Hub designed to provide uniform air distribution throughout the tube. The minute pores on the membrane behave as NRV to prevent water from entering the tube. 63X610mm comes with 3/4" SS adaptor for easy mounting of diffusers to the diffuser skid.



Model No.	Air Flow	Connection Size
FBD 63 x 610	2.0 - 5.5 M3	3/4" BSP / SS 304
FBD 63 x 1000	3.0 - 9.0 M3	3/4" BSP / SS 304
FBD 90 x 1000	5.0 - 12 M3	1" BSP / SS 304